

A Way Forward

Thank you for providing hope and possibility for all

Because of you, there will always be a way forward for Australians in need.

Possibility is the most wonderful thing.
It sustains people through difficult times.
It supports courage; it inspires action.

You have chosen to be part of a community that
not only believes in possibility, but helps provide it.

Thank you.

Every day, I see the kind of impact you will make
because you've decided to include a gift in your
Will to Mission Australia.

There's the relief and gratitude of people like
Kay, who told us, "Imagine you're drowning, and
a lifeguard says, 'I've got you.' That's how I felt
at Mission Australia."

There's the strength of one young woman who
pushed through her disadvantage and earned
tertiary qualifications. "Stability, support and
connection can change your life," she said.

In this edition of A Way Forward, you'll find
words of gratitude like these and more stories
of hope from the people you're helping through
your compassion.

Thank you for being their
safety net in times of need –
today and into the future.

Sharon Callister

Sharon Callister
Mission Australia CEO



Safe homes are the start of *something better*

“There are no words to describe how grateful I am.” – Nadia*

This beautiful letter was left for the Mission Australia team at Yaralla Cottages in Sydney, a transitional accommodation service for women over 35.

Every day, you help people like Nadia feel safe, so they can see the possibilities for a better life.

*Name has been changed to protect the identity of people we help.

When it comes to housing, prevention's better than cure.

Your support helps stop homelessness before it begins. Recent research shows that, when renters at risk of losing their homes reached out to Mission Australia for help, **98% of them avoided homelessness.***

*Mission Australia's Tenancy Support Impact Summary 2025

Mission Australia had supported me by providing me with housing, being safe, secure, respected.

They provided a lot of emotional support. Help me to connect in programs to socialise with others. Help to support my wellbeing.

I honestly feel there is no words to describe how grateful I am for all that caring support.

Right now I am very happy. I have a safe home and Mission Australia has supported me in buying furniture which I could not afford to buy.

Thank you so much Mission Australia and all the people that help to make this possible to change people's lives for the better.

Alfred's door is always open

“These people have been affected by circumstances that could have happened yesterday or five years ago. But you can make almost immediate changes just by giving them a place to call their own,” Alfred says.

For men in Brisbane, the path from homelessness to a safe home is often through Roma House.

When they arrive, Mission Australia caseworker Alfred is there to help them back on their feet. Roma

House offers temporary accommodation, a chance to connect with others, and help to secure permanent housing.

He has seen dozens of men turn their lives around, supported by compassion like yours.

“One of the greatest things about my job is helping them get that key, they walk in and just go, ‘Wow, this is mine!’”

Thanks to you, there will always be people like Alfred and places like Roma House.



SCAN THE QR CODE TO WATCH MORE OF ALFRED'S STORY





With your support, James and Naomi found a way forward

James* and Naomi* are doing their best to keep a roof over their kids' heads during a cost-of-living crisis.

When James was made redundant and their rental property was sold, they couldn't afford another lease. They had no other option but to sleep in the family car.

"It was terrifying," Naomi said. "I felt like I'd failed my children."

But the family did not have to face their fear and uncertainty alone – or for long. Instead, thanks to you they found help at Perth's Wattle House.

First, there were groceries and warm clothes for the kids. Then, Mission Australia case workers helped James and Naomi apply for public

housing. The whole family found friendship and a sense of community with other people at the weekly Wattle House barbeques.

Today, they are happily housed, but they're still regulars at those barbeques!

"The barbeques have brought us all together. And it's a little bit of light every time you hear someone else has got a house or a job," Naomi said.

"I never knew before how many people are struggling and rely on Wattle House. It's a necessity for this community."

Your future gift will make sure crisis services like Wattle House are always there to help families find connection, community and a way forward.



"Imagine you're drowning, and a lifeguard says, 'I've got you'. That point when you touch the board... You feel safe. That's how I felt at Mission Australia."

– Kay, who found hope and possibility thanks to Mission Australia and you

Common Ground

Where community, kindness, and compassion meet

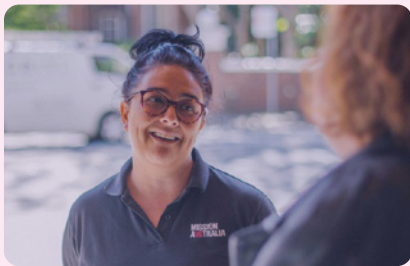
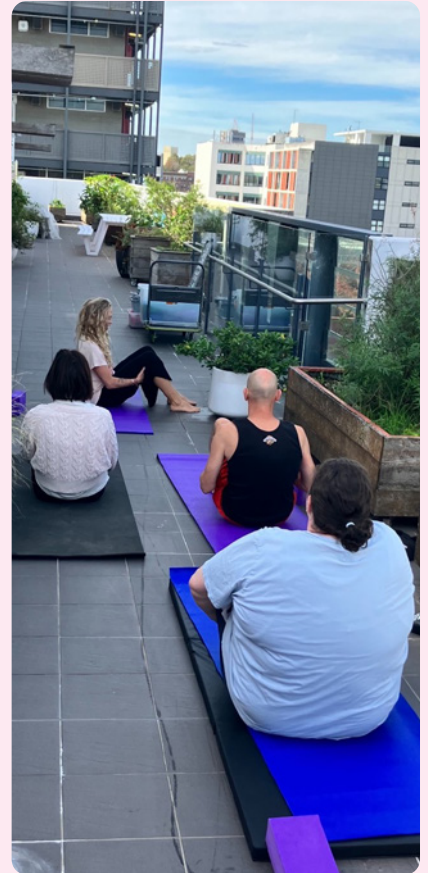
Common Ground in Sydney's inner west is changing what's possible for people who've experienced long-term homelessness.

Yes, it provides secure accommodation that gives residents a safe, stable place to live – often for the first time in years. But there is also a range of support that helps people with the challenges that may have contributed to their homelessness in the first place.

There are health services onsite, and opportunities for recreational and social activities. Thanks to you, people who've faced tough times are finding a community of care and support.

Your support means that no matter how difficult a problem, there is always hope and always possibility.

Thank you for choosing kindness now and well into the future.



There's a new way forward in the west

A newly opened Common Ground in Perth welcomed its first residents this year. There are 112 self-contained apartments, and Mission Australia will help residents access healthcare as well as education, training and work opportunities. **It's what a fresh start looks like – and what your kindness makes possible.**

Sophie's standing on her own feet

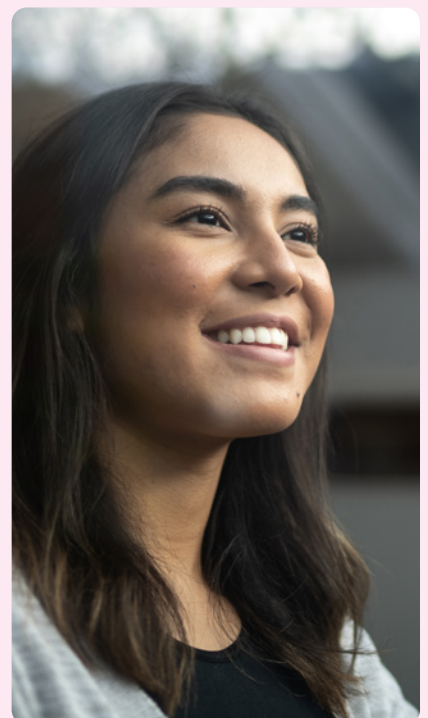
"My first impression of Common Ground was that it was modern and thoughtfully designed. It gave me a feeling of safety and dignity during a time when I really needed both.

The warmth came from the people. Tenants. Staff. Case managers. I found connection in conversations in the foyer; in moments of kindness.

The stability gave me the courage to enrol into a bridging course at uni. It wasn't easy. But I kept going – determined to succeed.

Today I have a five-year lease on an apartment of my own. I'm about to finish my Diploma of Counselling, after attaining a Diploma of Community Services.

Common Ground helped me believe that I could build my own future. Stability, support and connection can change your life."



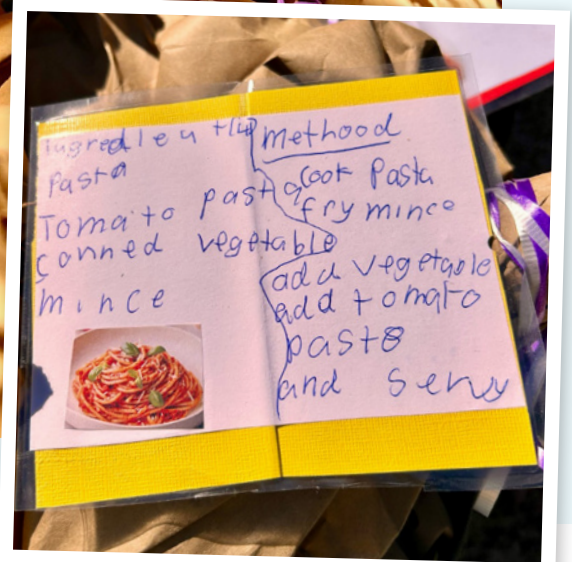
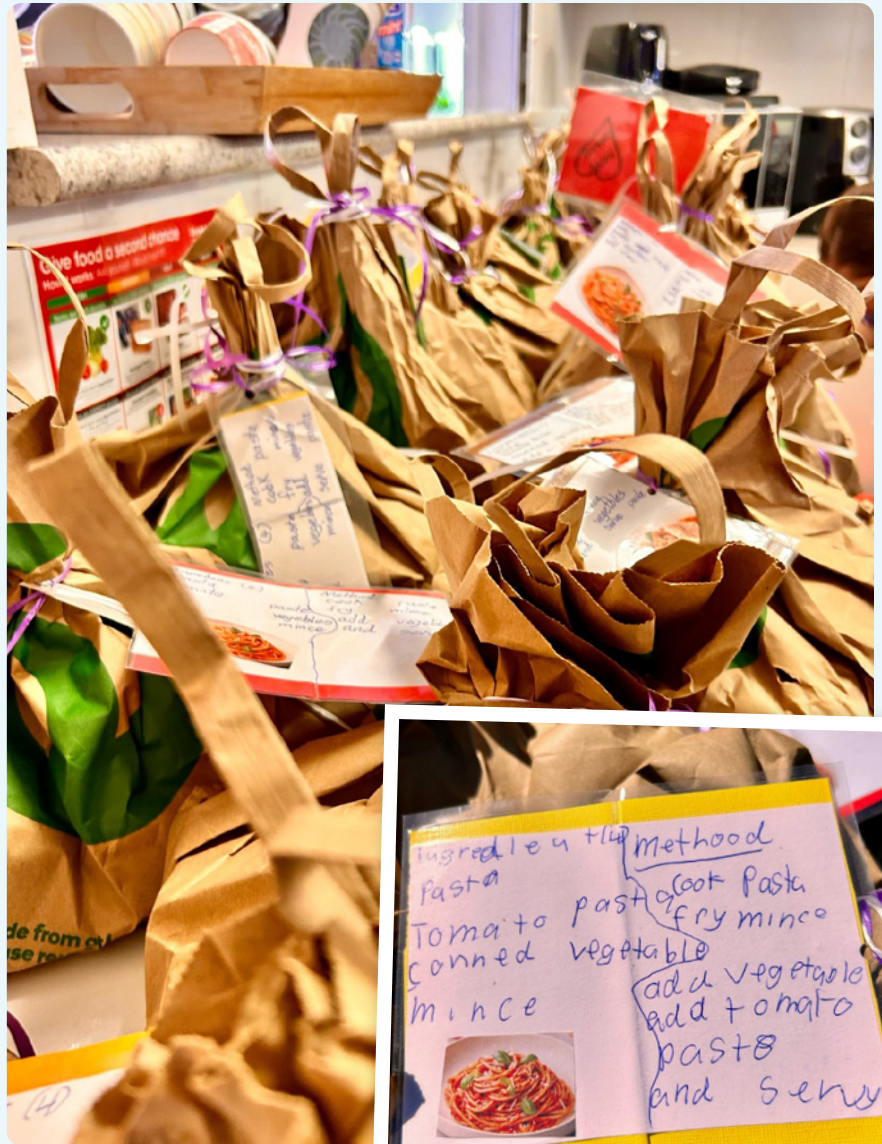
– Sophie*, past tenant of Common Ground, Sydney

Tiny hands, big hearts

Look at these beautiful donation bags for families doing it tough in Cairns.

Children from a local early learning centre filled each bag with ingredients from the garden at Mission Australia's Hambleton House plus recipe cards lovingly made by little hands.

Compassion and kindness like yours are at the heart of Mission Australia, and, as these pictures show, it's never too early to learn about the power of giving.



From the seeds of your kindness, big things can grow

Tenants from Mission Australia Housing on the Mid North Coast in NSW recently won an award for the community garden they created.

The garden has become a place that nurtures plants – and a sense of belonging.

Every week people gather, to care for the garden, develop friendships, cook, and eat together.

And, like your legacy, the seeds planted today will grow and thrive to nourish future generations.

"My gift is going to people who need help and support"

Sue's generosity will change lives and futures.

Sue knows the world isn't perfect. But that never stopped her from trying to make it a better place.

Sue told us, *"In a perfect world, we wouldn't have any poverty. We wouldn't have any homelessness. We'd have all children in good schools, and women having equality with men."*

Sue was just a teenager when she left home to do volunteer work in Zambia. It was a rewarding experience that would change the direction of her life and deepen her values.

Sue became a diplomat and spent years travelling the world.

"Overseas, I was involved in the Australian aid program so I could see that made a difference to international communities," she says.

But Sue could also see there was need at home in Australia.

"When I came to Sydney, homelessness was going on around me, and I didn't think there was anything I could do to help. But what I could do is give to Mission Australia."

Sue has made the kind decision to include Mission Australia in her Will. Like you, she belongs to a community of compassionate people who share a belief in hope, possibility and a better world.



Like you, Sue's helping to create the future she wants to see.

SCAN THE QR CODE TO READ MORE OF SUE'S STORY



Up for a chat? We always are.

We're so glad you're part of this compassionate community.

If you ever want a confidential conversation about your impact or have questions, please reach out to our friendly, knowledgeable Gifts in Wills team.

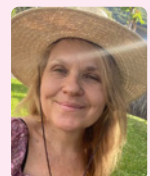
Nicki Grant

Gifts in Wills Program Manager
07 3394 8125
GrantN@missionaustralia.com.au



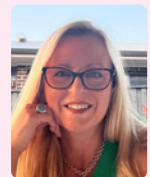
Lisa Gledhill

Gift Planning Advisor
0439 403 267
GledhillL@missionaustralia.com.au



Maria Natera

Gift Planning Advisor
0448 523 318
NateraM@missionaustralia.com.au



Ashlee Ralla

Estate Coordinator 02 9217 1064
RallaA@missionaustralia.com.au

MISSION AUSTRALIA



Always a way forward

Follow us on Facebook, Instagram, LinkedIn or Twitter to stay updated with stories like these:

@MissionAust

@mission_aust

@mission-australia

@MissionAust

missionaustralia.com.au/contact-us

1800 88 88 68

giftsinwills@missionaustralia.com.au